

Wander

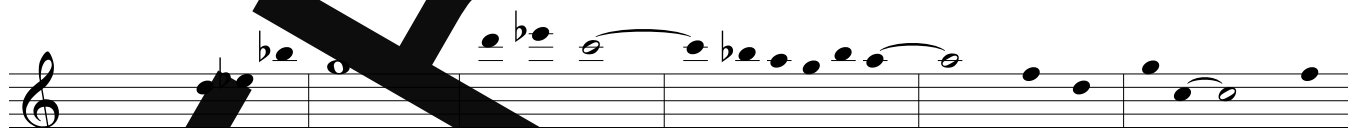
Wesley S. Uchiyama-Penix

Time is Nebulous

Melody

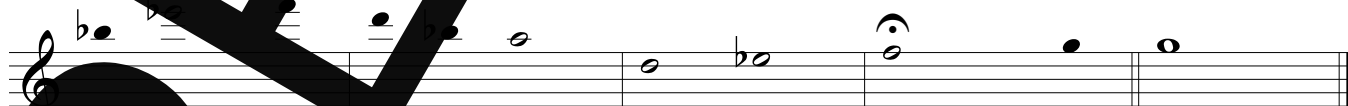


The Start



The Closing

The End



PREVIEW

The Start

Option 1

Option 2

Option 3

Option 4

Musical score for 'The Start' section, featuring four instruments (Inst. I-IV) across four measures. The score is divided into four measures, each with a different option for the first instrument (Inst. I).
- Measure 1 (Option 1): Inst. I has a melodic line starting on G4 and moving up to D5. Inst. II has a whole note G4. Inst. III has a whole note G4. Inst. IV has a whole note G3.
- Measure 2 (Option 2): Inst. I has a melodic line starting on G4 and moving up to D5. Inst. II has a whole note G4. Inst. III has a whole note G4. Inst. IV has a whole note G3.
- Measure 3 (Option 3): Inst. I has a melodic line starting on G4 and moving up to D5. Inst. II has a whole note G4. Inst. III has a whole note G4. Inst. IV has a whole note G3.
- Measure 4 (Option 4): Inst. I has a melodic line starting on G4 and moving up to D5. Inst. II has a whole note G4. Inst. III has a whole note G4. Inst. IV has a whole note G3.

The Closing

The End

Musical score for 'The Closing' and 'The End' sections, featuring four instruments (Inst. I-IV) across two measures. The score is divided into two measures.
- Measure 1 (The Closing): Inst. I has a melodic line starting on G4 and moving up to D5. Inst. II has a whole note G4. Inst. III has a whole note G4. Inst. IV has a whole note G3.
- Measure 2 (The End): Inst. I has a melodic line starting on G4 and moving up to D5. Inst. II has a whole note G4. Inst. III has a whole note G4. Inst. IV has a whole note G3. The text 'fade away' is written below each instrument staff in this measure.